

1.Driver the LCD

For driving the 3.2inch RPi LCD ,you need to install the Raspberry OS that we provide, you can find our configured system image at CD:

IMAGE/

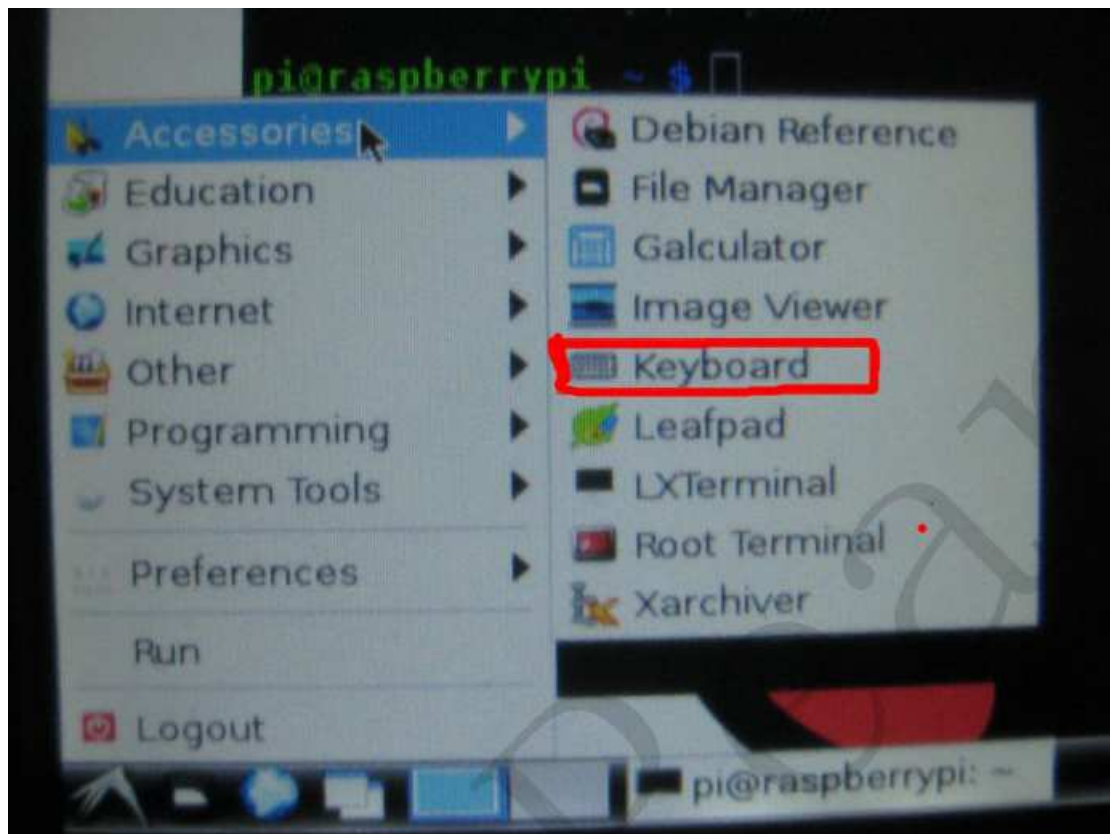
After installing the system image to your SD card , wait for a munit t, The LCD will start to work and the work LED will be lighted.

2.Calibration

On the LXTerminal, enter:

```
su pi  
DISPLAY=:0.0 xinput_calibrator
```

3.Soft/Virtual keyboard



4.Pi-Camera

On the LXTerminal, enter:

```
cd /home/pi/camera/
```

```
sudo Camera
```

Wait a few seconds. The Camera APP will work.

Double-click on the screen to capture images